

1st Annual New York

WORLD  **NEW YORK CITY
2010**

Maker Faire®

NEW YORK HALL OF SCIENCE

A two-day, family-friendly event that celebrates arts, crafts, engineering, food, music, science and technology projects and the Do-It-Yourself (DIY) mindset.

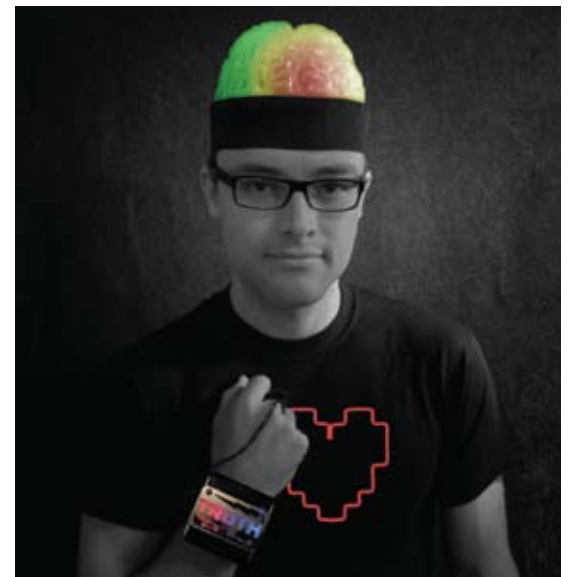
Robots ■ Rock-It Science Cabaret ■ ArcAttack!
Chariot Races ■ Soldering ■ Madagascar Midway
Cyclecide ■ BUST Craftacular ■ Fabrication
DIY Science & Technology ■ Arduino & Kits
Coke Zero & Mentos Fountains ■ 3D Printing
Life-Size Mousetrap ■ And so much more!

THE
Future
is in your
Hands

Come see what happens when we imagine the world differently!



CREATE
INVENT
MAKE
LEARN
CRAFT



Do You DIY?



Go to makerfaire.com for schedules, makers, transportation, announcements, Twitter & more!

September 25 & 26

NEW YORK HALL OF SCIENCE

SAT: 10AM–7PM, SUN: 10AM–6PM

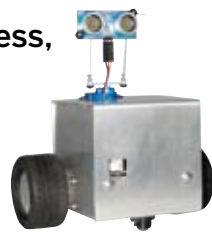
ny **sci**

MakerFaire.com

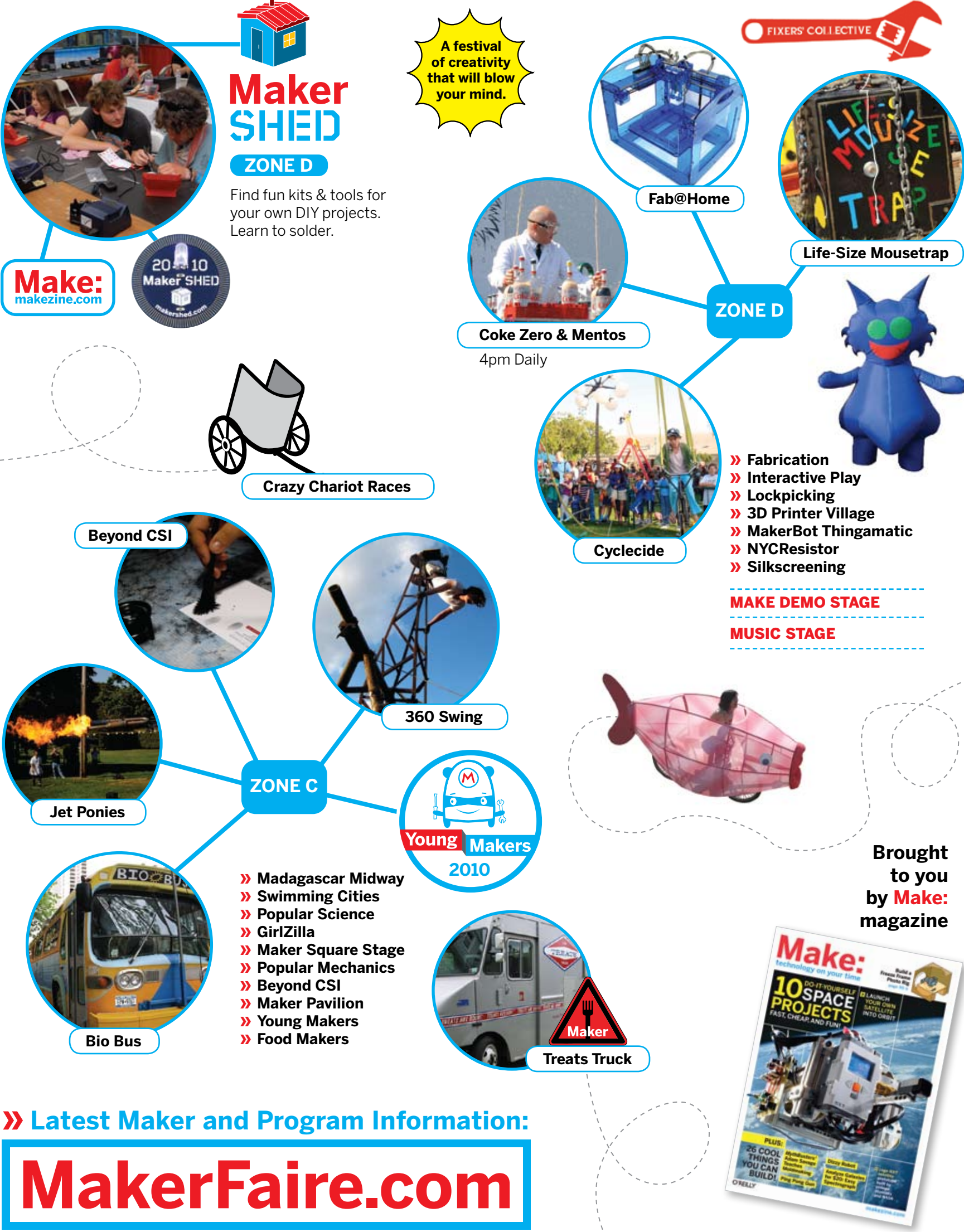
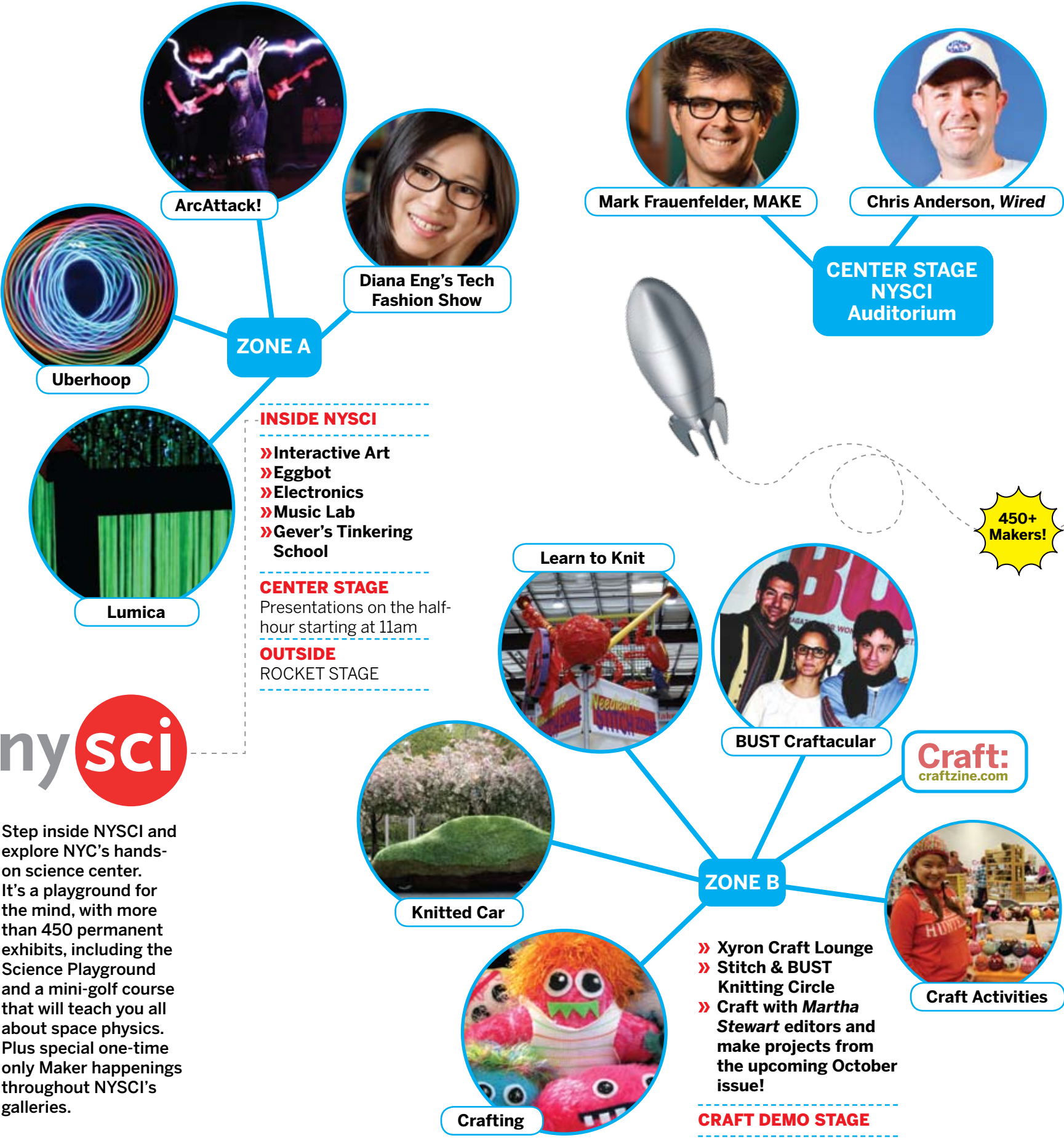


Come explore
World Maker Faire
at the New York
Hall of Science
in Queens.

World Maker Faire is a showcase of invention, creativity and resourcefulness, a celebration of the DIY mindset and an inspiring experience all its own. Come meet over 450 amazing makers from the New York area who will demonstrate their projects. World Maker Faire is equal parts art fair and science fair, but it's also much more fun and engaging.



Bring the whole family and enjoy a full day at World Maker Faire 2010!



» HOURS

Rain or shine!

Sat. Sept. 25th, 10am – 7pm

Sun. Sept. 26th, 10am – 6pm

Program details, schedules,
and transportation at

makerfaire.com

» LOCATION

New York Hall of Science

47-01 111th Street

Queens, NY 11368

7 Train to 111th Street

» PARKING

Citi Field \$10 with free shuttles
to World Maker Faire at NYSCI

» TICKETS

On-site (cash or credit):

■ Adults \$25 (18 and over)

■ Seniors \$20 (62+)

■ Students \$15 (ages 13–21)
Must have valid student ID.

■ Youth \$10 (ages 2–17)

Kids (under 2) Free.

ATMs are available on-site.

Safety Waivers are required to
participate in some activities.

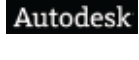
Pets are not allowed, for their safety.

Strollers and backpacks are allowed.

World Maker Faire
stage schedules
for speakers, demos
and attractions
available online at
makerfaire.com
and on-site at
information booths!



SPONSORED BY:



Drive one.



MakerFaire.com

BROUGHT TO YOU BY

Make:
makezine.com

O'REILLY

A division of O'Reilly Media, Maker Media is devoted entirely to a growing community
of resourceful people who believe that if you can imagine it, you can make it.