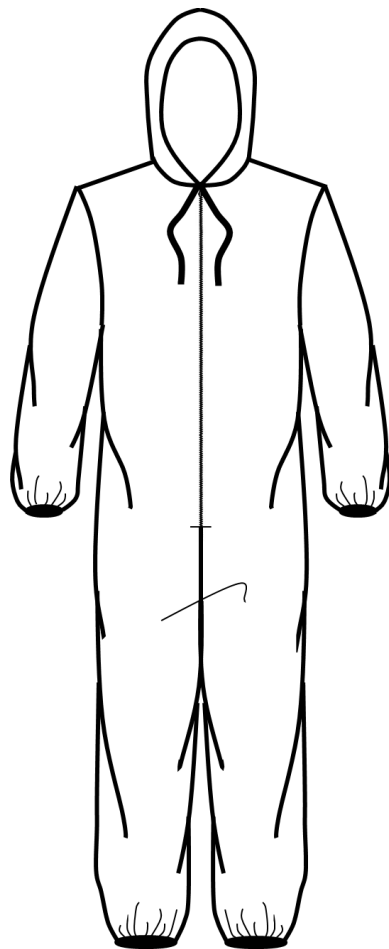


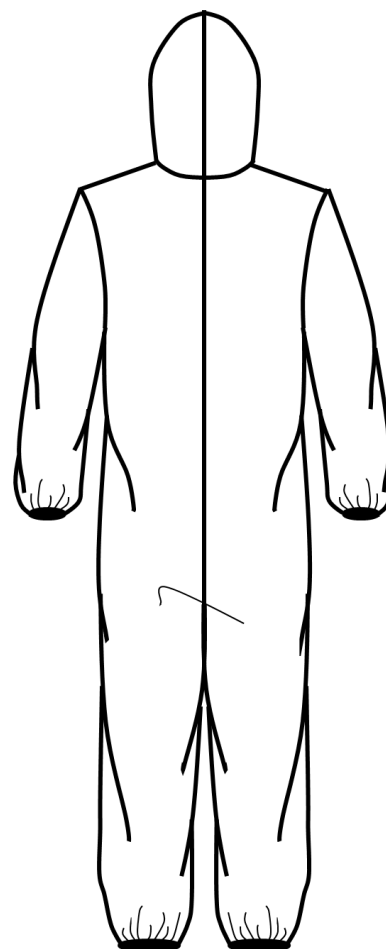
# PS-1 SUIT

## DESIGN PAGE

STYLE NUMBER:	PS-1 SUIT	FABRICATION	SPUN-BOND FABRIC
DESCRIPTION:	REPLICATED PROTECTIVE SUIT	INITIATED BY:	MICH DULCE for MANILA PROTECTIVE GEAR SEWING CLUB
DATE:	MARCH 25, 2020	CREATED BY:	KENDI MARISTELA



FRONT



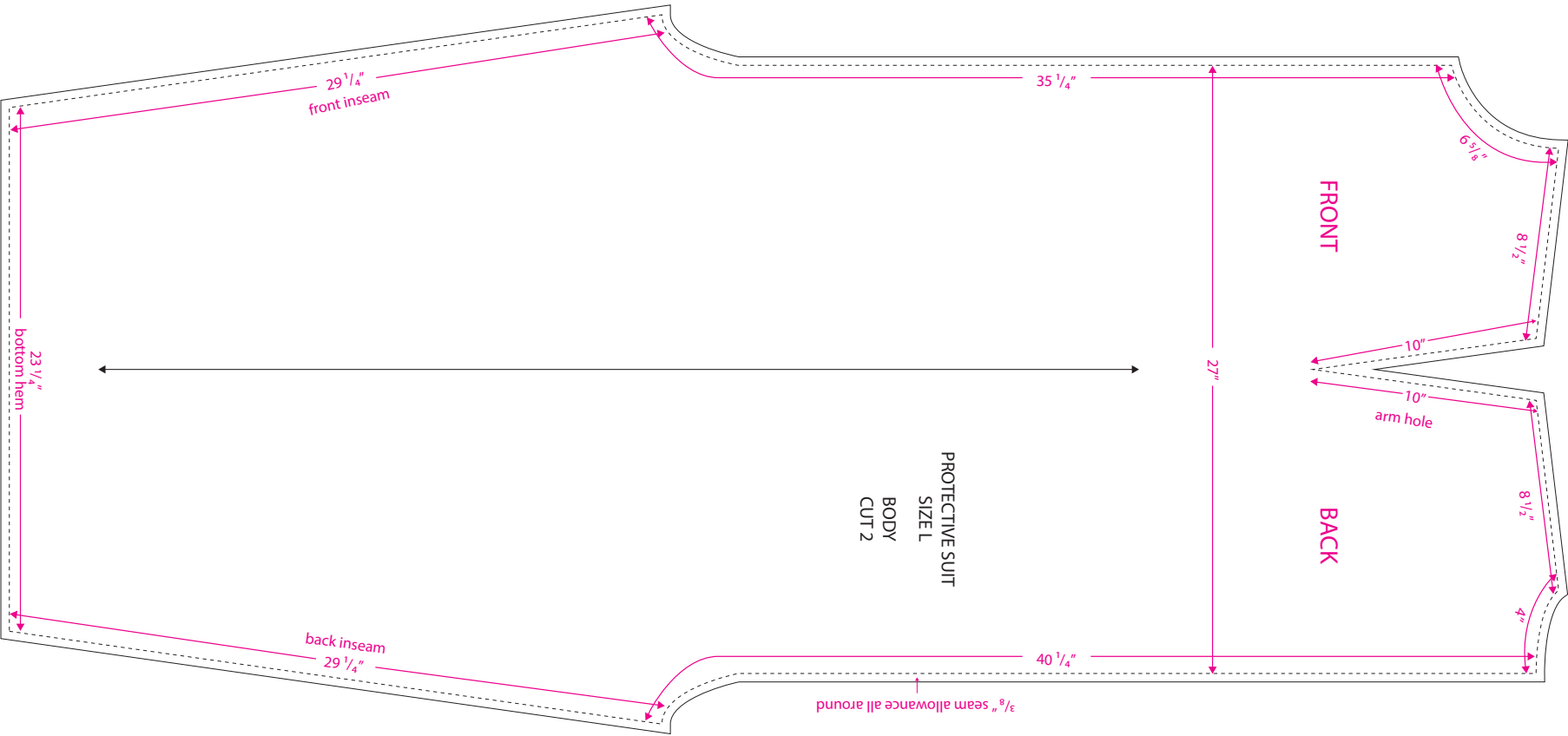
BACK

PS-1 SUIT		STYLE IMAGE REFERENCE	
STYLE NUMBER:	PS-1 SUIT	FABRICATION	SPUN-BOND FABRIC
DESCRIPTION:	REPLICATED PROTECTIVE SUIT	INITIATED BY:	MICH DULCE for MANILA PROTECTIVE GEAR SEWING CLUB
DATE:	MARCH 25, 2020	CREATED BY:	KENDI MARISTELA

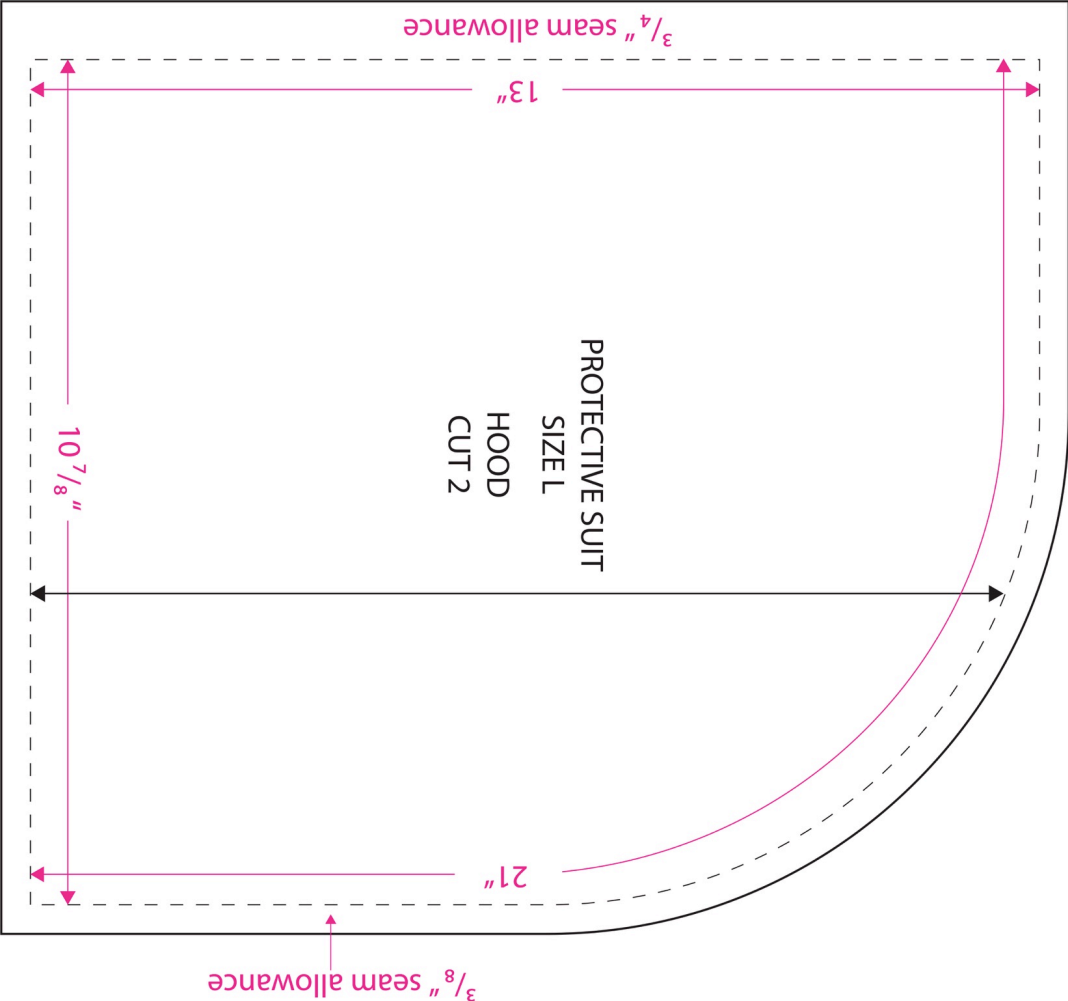


PS-1 SUIT			BILL OF MATERIALS	
STYLE NUMBER:	PS-1 SUIT		FABRICATION	SPUN-BOND FABRIC
DESCRIPTION:	REPLICATED PROTECTIVE SUIT		INITIATED BY:	MICH DULCE for MANILA PROTECTIVE GEAR SEWING CLUB
DATE:	MARCH 25, 2020		CREATED BY:	KENDI MARISTELA
ITEM	PLACEMENT	COLOR	REMARKS	
Fabric: Spun-Bond Fabric	Body, Sleeve, Hood	Not Specified	Materials should be able to resist soaking from blood and other fluids. Suggested alternative materials to create non medical grade suits are water repellant fabrics like <b>nylon tafetta</b> or <b>poly microfiber</b> , commonly used as fabric for umbrellas and raincoats. These can be reused and washed. For a disposable version, non woven material of at least 50gsm can be utilized. <b>Do a drop test with water to check if it will repel liquids.</b>	
ZiPROTECTIVEr + ZiPROTECTIVEr Pull Tab	Centerfront, 26"	Match with fabric	Finished zip of 28" should be used, but if unavailable, a continious zip with pull may be used. If no zippers are available, adjust the pattern to create an overlap of at least 2" per side to secure with velcro. Make sure it closes securely.	
1/4" Twill Tape (Flat) 41" long per suit	Draw String at Hood Centerfront	Match with fabric	Alternative materials: Bias tapes, shoelace, self-fabric bias tape, ribbon.	
1/4" Rubber Elastic Tape	Sleeve hem Bottom Hem	Black/White	Alternative: 1/4" garter, 1/4" mobilon	
Thread	Seams, ziPROTECTIVEr	Match with fabric	Notes: Use Tex size between Tex 24 to 30 only (or Tiket 80 to Tiket 120)	

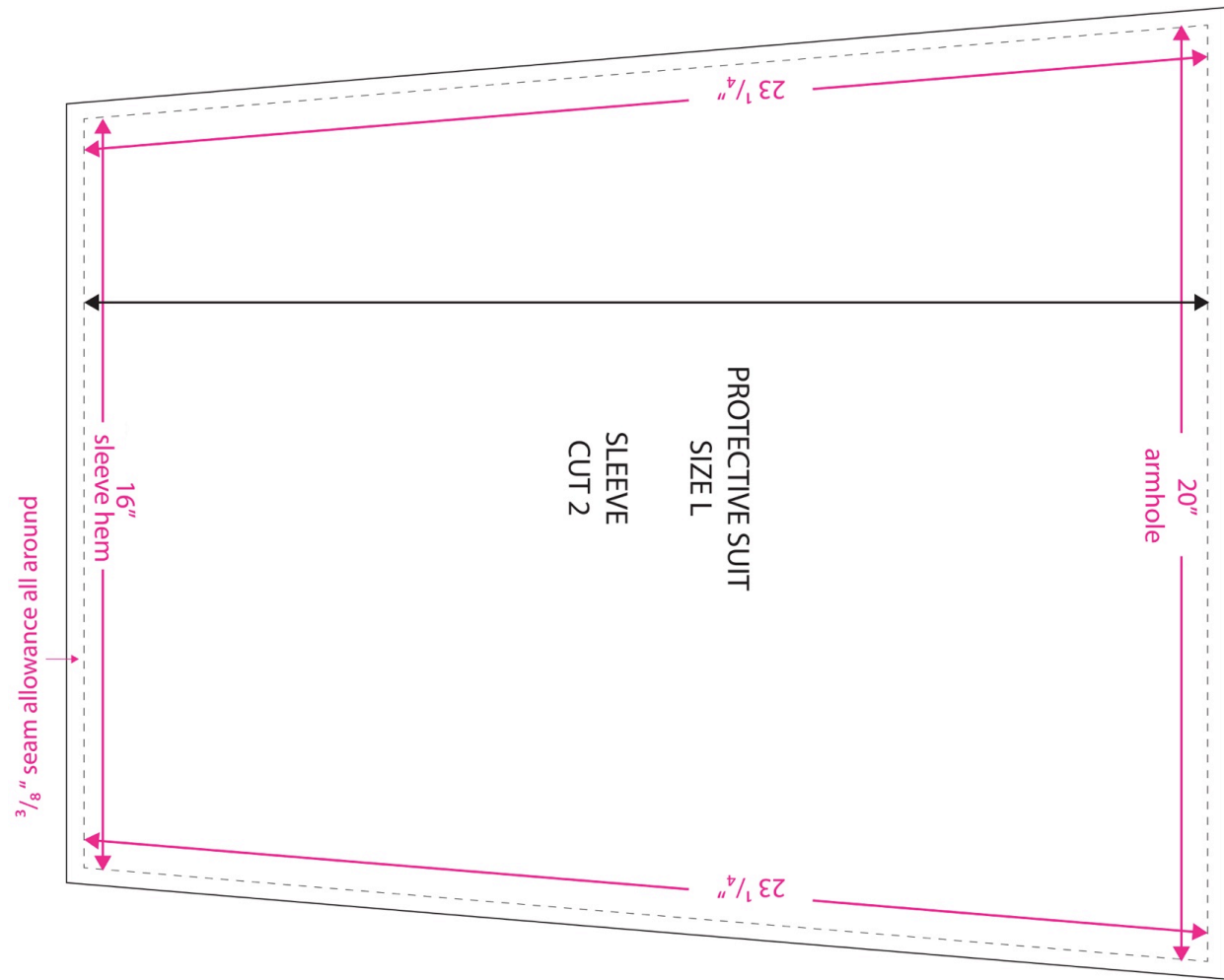
PS-1 SUIT		BODY PATTERN	
STYLE NUMBER:	PS-1 SUIT	FABRICATION	SPUN-BOND FABRIC
DESCRIPTION:	REPLICATED PROTECTIVE SUIT	INITIATED BY:	MICH DULCE for MANILA PROTECTIVE GEAR SEWING CLUB
DATE:	MARCH 25, 2020	CREATED BY:	LEA EMPALMADO and AJ DIMARUCOT



PS-1 SUIT		HOOD PATTERN	
STYLE NUMBER:	PS-1 SUIT	FABRICATION	SPUN-BOND FABRIC
DESCRIPTION:	REPLICATED PROTECTIVE SUIT	INITIATED BY:	MICH DULCE for MANILA PROTECTIVE GEAR SEWING CLUB
DATE:	MARCH 25, 2020	CREATED BY:	LEA EMPALMADO and AJ DIMARUCOT



PS-1 SUIT		SLEEVE PATTERN	
STYLE NUMBER:	PS-1 SUIT	FABRICATION	SPUN-BOND FABRIC
DESCRIPTION:	REPLICATED PROTECTIVE SUIT	INITIATED BY:	MICH DULCE for MANILA PROTECTIVE GEAR SEWING CLUB
DATE:	MARCH 25, 2020	CREATED BY:	LEA EMPALMADO and AJ DIMARUCOT



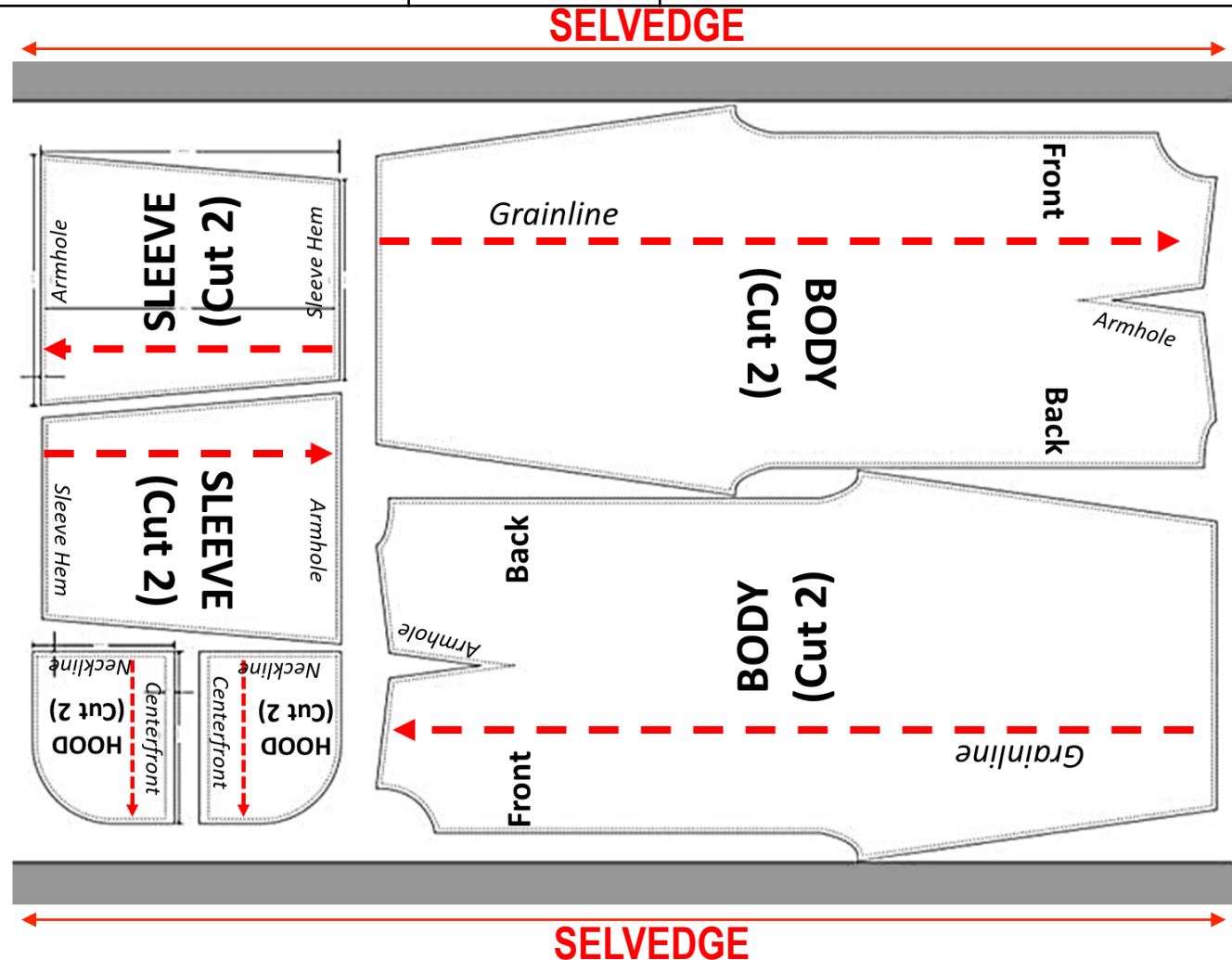
# PS-1 SUIT

## LAYOUT AND CUTTING

STYLE NUMBER:	PS-1 SUIT	FABRICATION	SPUN-BOND FABRIC
DESCRIPTION:	REPLICATED PROTECTIVE SUIT	INITIATED BY:	MICH DULCE for MANILA PROTECTIVE GEAR SEWING CLUB
DATE:	MARCH 25, 2020	CREATED BY:	KENDI MARISTELA

### Notes for Cutting and Layout:

1. Please stick to the advised layout of pattern on the fabric to maximized our materials. Layout for cutting is 2-way.
2. **PLEASE DO NOT PIN the pattern onto the fabric.** Use weights or clamps to secure the pattern onto the fabric lay/spread. **We are trying to avoid unnecessary holes.**
3. Cut using sharp shears/ rotary cutter only.
4. Please keep all endcuts (retaso) to be used for mask making.



PS-1 SUIT		CONSTRUCTION DETAIL PAGE	
STYLE NUMBER:	PS-1 SUIT	FABRICATION	SPUN-BOND FABRIC
DESCRIPTION:	REPLICATED PROTECTIVE SUIT	INITIATED BY:	MICH DULCE for MANILA PROTECTIVE GEAR SEWING CLUB
DATE:	MARCH 25, 2020	CREATED BY:	KENDI MARISTELA

**CONSTRUCTION DETAILS OF ACTUAL SAMPLE (Pages 9 – 14)  
MAY BE USED IF YOU HAVE THE FOLLOWING SPECIAL  
MACHINES:**

- 1. 3-Thread Overlock and/or**
- 2. 4-Thread Overlock**



# PS-1 SUIT

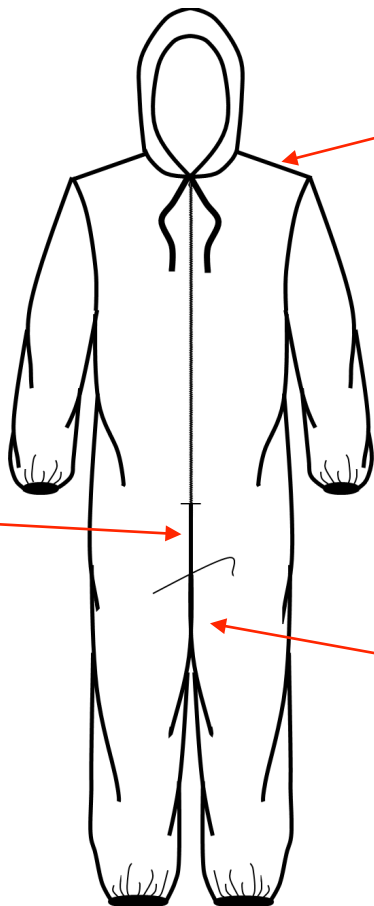
## CONSTRUCTION DETAIL PAGE

STYLE NUMBER:	PS-1 SUIT	FABRICATION	SPUN-BOND FABRIC
DESCRIPTION:	REPLICATED PROTECTIVE SUIT	INITIATED BY:	MICH DULCE for MANILA PROTECTIVE GEAR SEWING CLUB
DATE:	MARCH 25, 2020	CREATED BY:	KENDI MARISTELA

### CONSTRUCTION DETAILS OF ACTUAL SAMPLE *(Apply if you have the special machines required)*

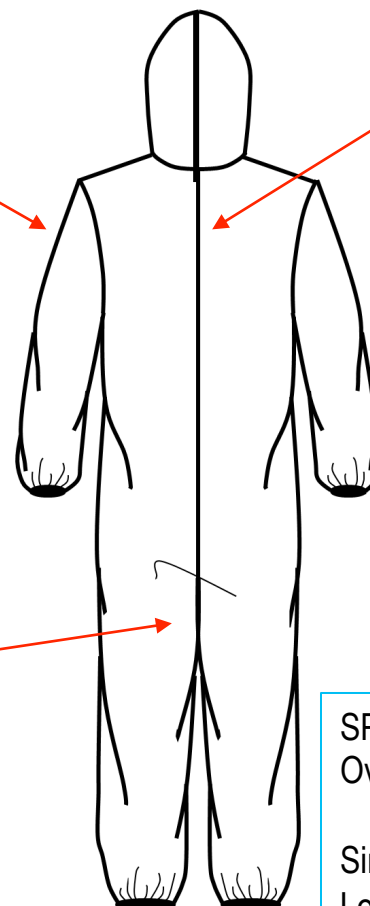
*Optional: You may add duct tape or secured adhesive tapes on all seams at the EXTERIOR SIDE. Apply only if the adhesive available will not tear after wash or any abrasion.*

**Centerfront Seam, ZiPROTECTIVE edge to Crotch:**  
Plain Seam, 301 Single Needle Lockstitch extended by 2" to back crotch for reinforcement



**Shoulder Seam and Sleeve Overarm:**  
504 Overedge (3-Thread Overlock) or 514 Overedge (4-Thread Overlock)

**Inseam:**  
504 Overedge (3-Thread Overlock) or 514 Overedge (4-Thread Overlock)



**Centerback Seam**  
504 Overedge (3-Thread Overlock) or 514 Overedge (4-Thread Overlock)

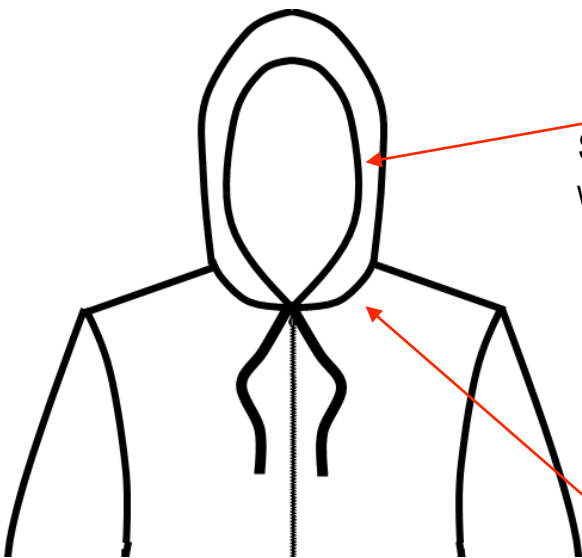
SPI:  
Overlock: 8-10 spi  
  
Single and Double Lockstitch: 6-8 spi

# PS-1 SUIT

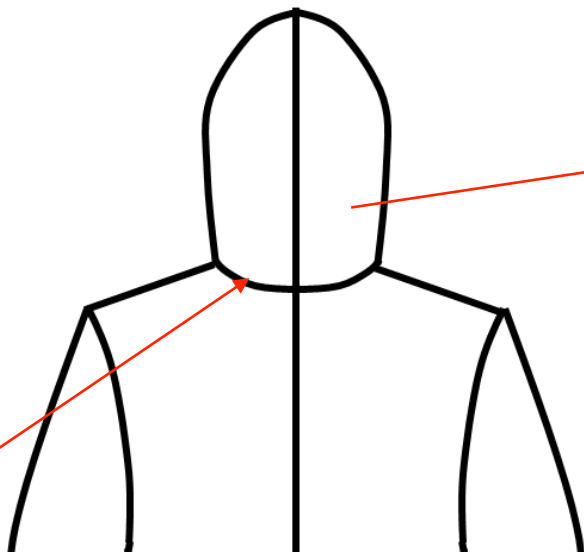
## CONSTRUCTION DETAIL PAGE

STYLE NUMBER:	PS-1 SUIT	FABRICATION	SPUN-BOND FABRIC
DESCRIPTION:	REPLICATED PROTECTIVE SUIT	INITIATED BY:	MICH DULCE for MANILA PROTECTIVE GEAR SEWING CLUB
DATE:	MARCH 25, 2020	CREATED BY:	KENDI MARISTELA

**CONSTRUCTION DETAILS OF ACTUAL SAMPLE (Apply if you have the special machines required)**



**Hoodie Opening: 3/4"**  
Single Turnback  
with 1/4" Double  
Needle  
Edgestitch (see  
next page)



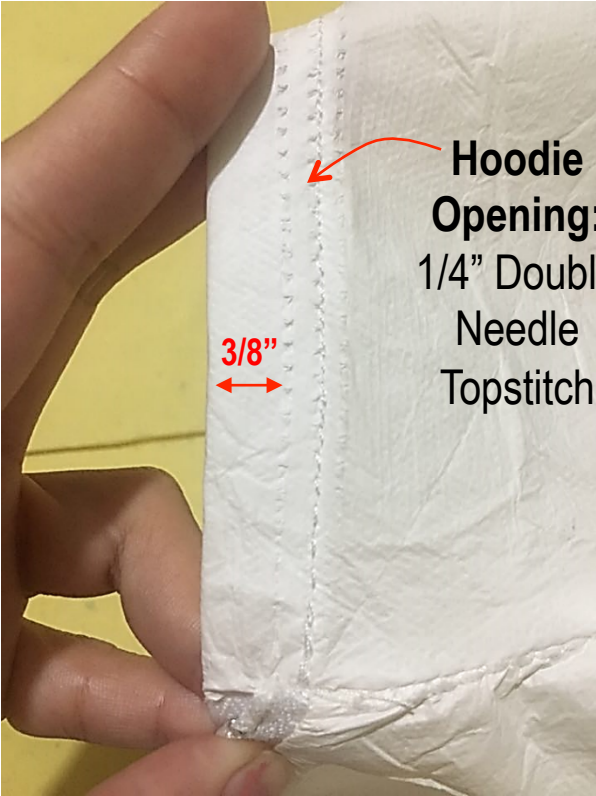
**Hood Centerback Seam:**  
Overedge (3-Thread  
Overlock) or  
514 Overedge  
(4-Thread  
Overlock)

**Neckline Seam (Attachment of Hood):** Overedge  
(3-Thread  
Overlock) or 514  
Overedge (4-Thread  
Overlock)

SPI:  
Overlock: 8-10 spi  
  
Single and Double  
Lockstitch: 6-8 spi

PS-1 SUIT		CONSTRUCTION DETAIL PAGE	
STYLE NUMBER:	PS-1 SUIT	FABRICATION	SPUN-BOND FABRIC
DESCRIPTION:	REPLICATED PROTECTIVE SUIT	INITIATED BY:	MICH DULCE for MANILA PROTECTIVE GEAR SEWING CLUB
DATE:	MARCH 25, 2020	CREATED BY:	KENDI MARISTELA

**CONSTRUCTION DETAILS OF ACTUAL SAMPLE *(Apply if you have the special machines required)***



**EXTERIOR VIEW**



**INTERIOR VIEW**

SPI:  
Overlock: 8-10 spi  
  
Single and Double  
Lockstitch: 6-8 spi

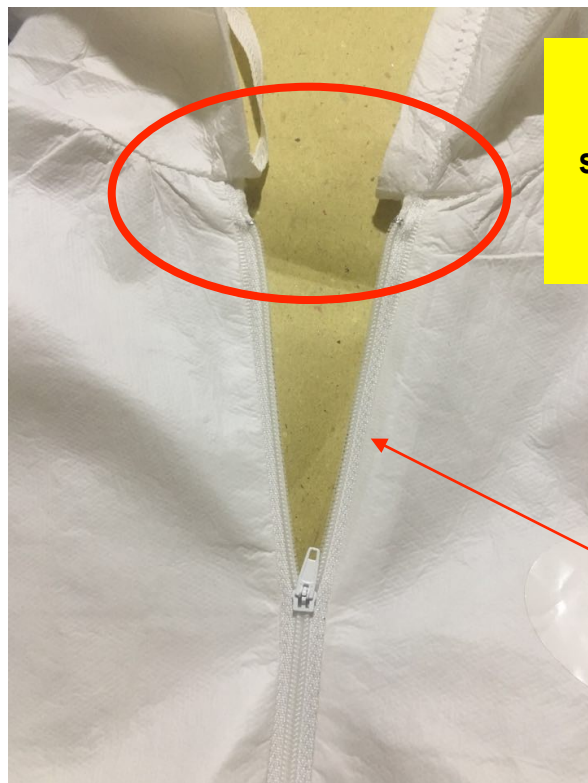
**HOOD OPENING**

# PS-1 SUIT

## CONSTRUCTION DETAIL PAGE

STYLE NUMBER:	PS-1 SUIT	FABRICATION	SPUN-BOND FABRIC
DESCRIPTION:	REPLICATED PROTECTIVE SUIT	INITIATED BY:	MICH DULCE for MANILA PROTECTIVE GEAR SEWING CLUB
DATE:	MARCH 25, 2020	CREATED BY:	KENDI MARISTELA

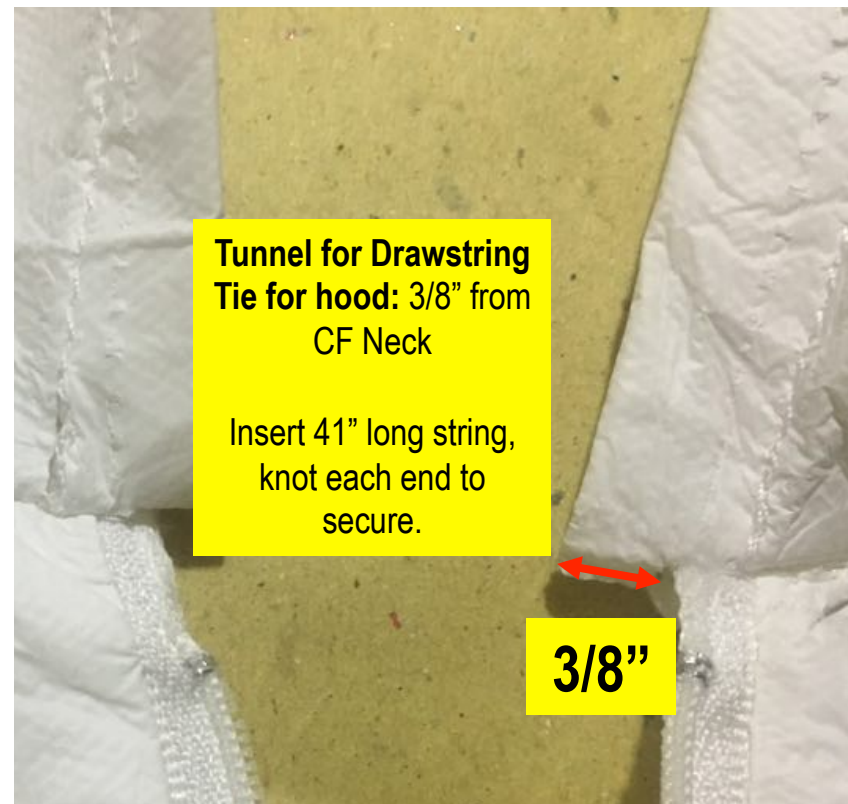
### CONSTRUCTION DETAILS OF ACTUAL SAMPLE *(Apply if you have the special machines required)*



**Secure hood at CF  
neckline with 1/4"  
single lockstitch for  
reinforcement  
(bartack)**

**Attach  
ZIPROTECTIVER to  
body with:  
301 Single Needle  
Lockstitch**

SPI:  
Overlock: 8-10 spi  
Single and Double Lockstitch: 6-8 spi



**Tunnel for Drawstring  
Tie for hood: 3/8" from  
CF Neck**

Insert 41" long string,  
knot each end to  
secure.

**3/8"**

**ZIPROTECTIVER**

# PS-1 SUIT

## CONSTRUCTION DETAIL PAGE

STYLE NUMBER:	PS-1 SUIT	FABRICATION	SPUN-BOND FABRIC
DESCRIPTION:	REPLICATED PROTECTIVE SUIT	INITIATED BY:	MICH DULCE for MANILA PROTECTIVE GEAR SEWING CLUB
DATE:	MARCH 25, 2020	CREATED BY:	KENDI MARISTELA

### CONSTRUCTION DETAILS OF ACTUAL SAMPLE *(Apply if you have the special machines required)*

**Sleeve and Bottom Hem:** Overedge (3-Thread Overlock) or 514 Overedge (4-Thread Overlock) with Rubber Elastic or Mobilon Insert



**EXTERIOR VIEW**

Measurement on  
Flat (Relax):

**Sleeve hem: 4"**

**Bottom Hem: 5 1/2"**

Full Opening

Measurement:

**Sleeve Hem: 8"**

**Bottom Hem: 11"**



**INTERIOR VIEW**

## SLEEVE AND BOTTOM HEM

SPI:  
Overlock: 8-10 spi

Single and Double  
Lockstitch: 6-8 spi



PS-1 SUIT		OPERATIONS BREAKDOWN (ASSEMBLY)	
STYLE NUMBER:	PS-1 SUIT	FABRICATION	SPUN-BOND FABRIC
DESCRIPTION:	REPLICATED PROTECTIVE SUIT	INITIATED BY:	MICH DULCE for MANILA PROTECTIVE GEAR SEWING CLUB
DATE:	MARCH 25, 2020	CREATED BY:	KENDI MARISTELA

**CONSTRUCTION DETAILS OF ACTUAL SAMPLE** *(Apply if you have the special machines required)*

**Operations Breakdown (Assembly):**

1. Join Front and Back body at Inseam with 504 or 514 overedge with 3/8" sewing allowance.
2. Attach sleeve to body (with seam at the overarm) with 504 or 514 overedge with 3/8" sewing allowance.
3. Close the shoulder seam and sleeve overarm seam continuously from neckline to sleeve hem with 504 or 514 overedge with 3/8" sewing allowance.
4. Join centerback seam up to the ziPROTECTIVEr bottom edge placement at centerfront with 504 or 514 overedge with 3/8" sewing allowance.
5. Attach 26" ZiPROTECTIVEr at centerfront with 301 single needle lockstitch with 3/8" sewing allowance.
6. Hood: Join left and right hood at centerback with 301 single needle lockstitch with 3/8" sewing allowance. Finish hood opening with 1/2" single turnback/fold, 1/4" double needle edgestitch leaving a 3/8 wide tunnel for drawstring. Insert 41"-long drawstring. Knot the end of the string to secure:
7. Attach hood to neckline with 504 or 514 overedge with 3/8" sewing allowance. Secure hood at CF neckline with 1/4" single lockstitch/reinforcement stitch (bartack).
8. Finish hem with 504 or 514 overedge with 3/8" sewing allowance with Rubber Elastic Tape or mobilon insert. Elastic length- (a) Sleeve Hem: 8" long plus 3/8" allowance on each end; (b) Bottom hem: 11" plus 3/8" allowance on each end.

**\*\*nothing follows\*\***

PS-1 SUIT		CONSTRUCTION DETAIL PAGE	
STYLE NUMBER:	PS-1 SUIT	FABRICATION	SPUN-BOND FABRIC
DESCRIPTION:	REPLICATED PROTECTIVE SUIT	INITIATED BY:	MICH DULCE for MANILA PROTECTIVE GEAR SEWING CLUB
DATE:	MARCH 25, 2020	CREATED BY:	KENDI MARISTELA

**IF THE AVAILABLE MACHINE IS LIMITED TO LOCKSTITCH ONLY (HI-SPEED OR PORTABLE), THE CONSTRUCTION DETAILS FOR THE DIY PROTECTIVE SUIT APPLY.**

**(Pages 16-21)**

# PS-1 SUIT

## CONSTRUCTION DETAIL PAGE

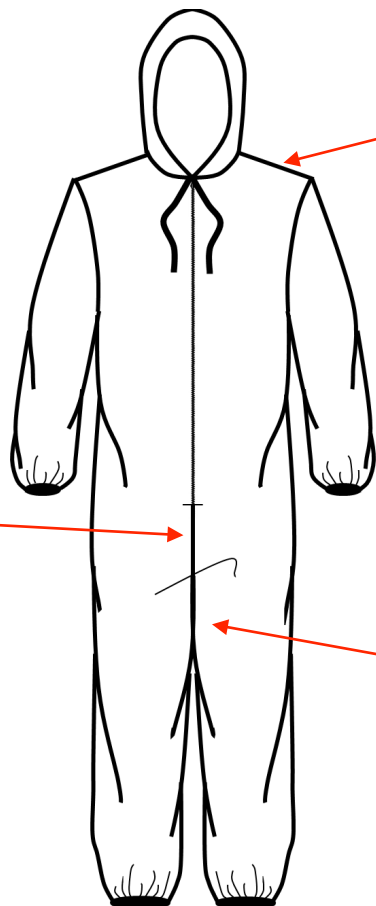
STYLE NUMBER:	PS-1 SUIT	FABRICATION	SPUN-BOND FABRIC
DESCRIPTION:	REPLICATED PROTECTIVE SUIT	INITIATED BY:	MICH DULCE for MANILA PROTECTIVE GEAR SEWING CLUB
DATE:	MARCH 25, 2020	CREATED BY:	KENDI MARISTELA

### RECOMMENDED CONSTRUCTION DETAILS FOR DIY PROTECTIVE (Apply if available machine is SINGLE LOCKSTITCH)

*Optional: You may add duct tape or secured adhesive tapes on all seams at the EXTERIOR SIDE. Apply only if the adhesive available will not tear after wash or any abrasion.*

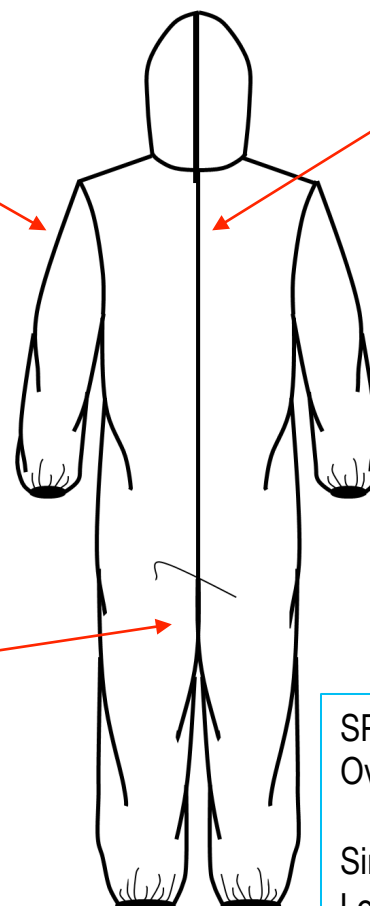
**Centerfront Seam, to Crotch:**  
Plain Seam, 301 Single Needle Lockstitch

Reinforce with 301 Single Needle Lockstitch 2" to the back crotch and 2" to the front crotch



**Shoulder Seam and Sleeve Overarm:**  
Plain Seam, 301 Single Needle Lockstitch

**Inseam:**  
Plain Seam, 301 Single Needle Lockstitch



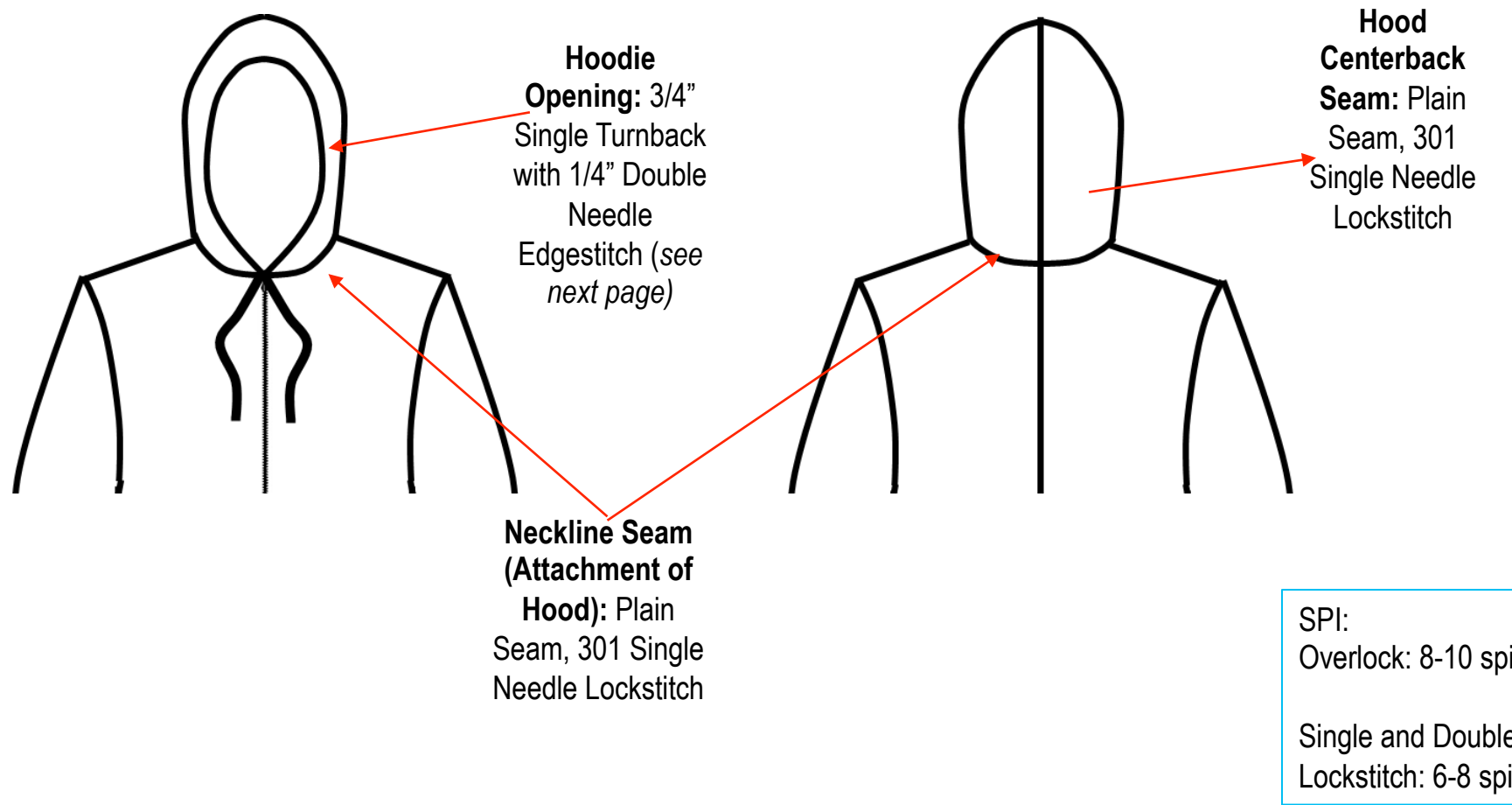
**Centerback Seam**  
Plain Seam, 301 Single Needle Lockstitch

SPI:  
Overlock: 8-10 spi  
  
Single and Double Lockstitch: 6-8 spi



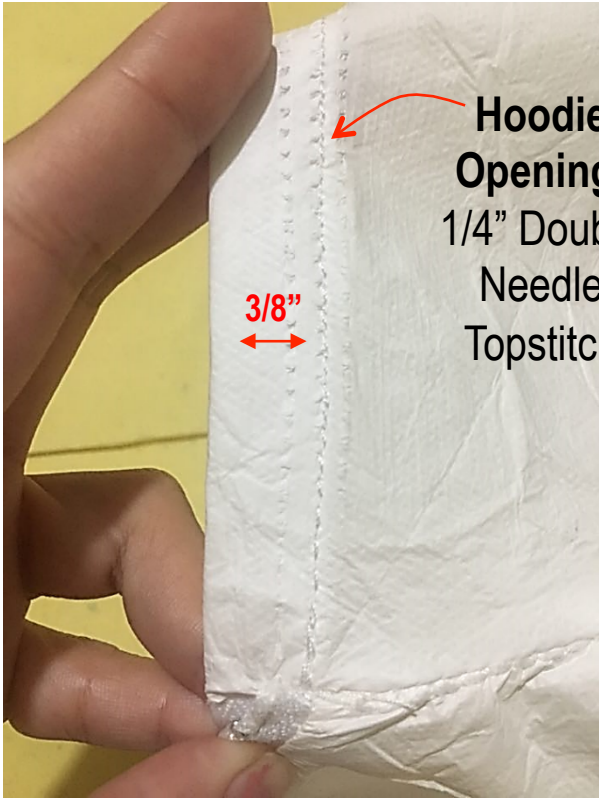
PS-1 SUIT		CONSTRUCTION DETAIL PAGE	
STYLE NUMBER:	PS-1 SUIT	FABRICATION	SPUN-BOND FABRIC
DESCRIPTION:	REPLICATED PROTECTIVE SUIT	INITIATED BY:	MICH DULCE for MANILA PROTECTIVE GEAR SEWING CLUB
DATE:	MARCH 25, 2020	CREATED BY:	KENDI MARISTELA

**RECOMMENDED CONSTRUCTION DETAILS FOR DIY PROTECTIVE (Apply if available machine is SINGLE LOCKSTITCH)**



PS-1 SUIT		CONSTRUCTION DETAIL PAGE	
STYLE NUMBER:	PS-1 SUIT	FABRICATION	SPUN-BOND FABRIC
DESCRIPTION:	REPLICATED PROTECTIVE SUIT	INITIATED BY:	MICH DULCE for MANILA PROTECTIVE GEAR SEWING CLUB
DATE:	MARCH 25, 2020	CREATED BY:	KENDI MARISTELA

**RECOMMENDED CONSTRUCTION DETAILS FOR DIY PROTECTIVE (Apply if available machine is SINGLE LOCKSTITCH)**



EXTERIOR VIEW



INTERIOR VIEW

HOOD OPENING

SPI:  
Overlock: 8-10 spi

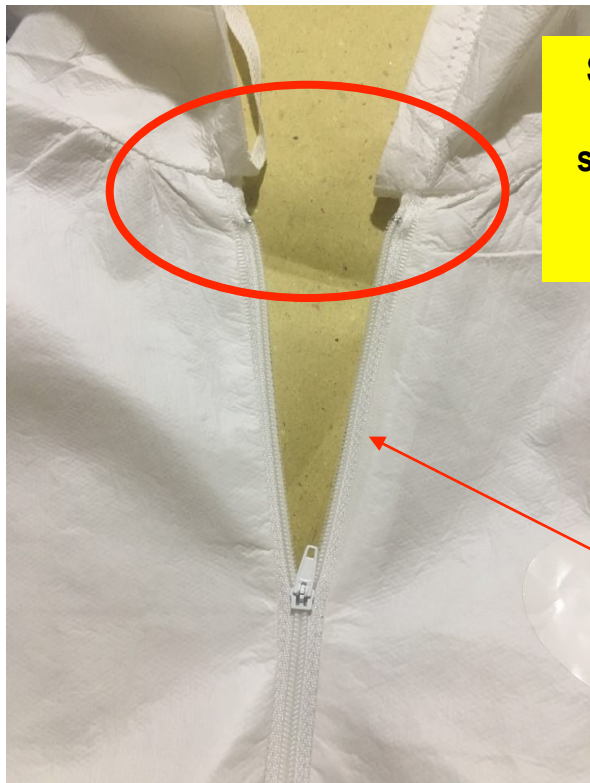
Single and Double  
Lockstitch: 6-8 spi

# PS-1 SUIT

## CONSTRUCTION DETAIL PAGE

STYLE NUMBER:	PS-1 SUIT	FABRICATION	SPUN-BOND FABRIC
DESCRIPTION:	REPLICATED PROTECTIVE SUIT	INITIATED BY:	MICH DULCE for MANILA PROTECTIVE GEAR SEWING CLUB
DATE:	MARCH 25, 2020	CREATED BY:	KENDI MARISTELA

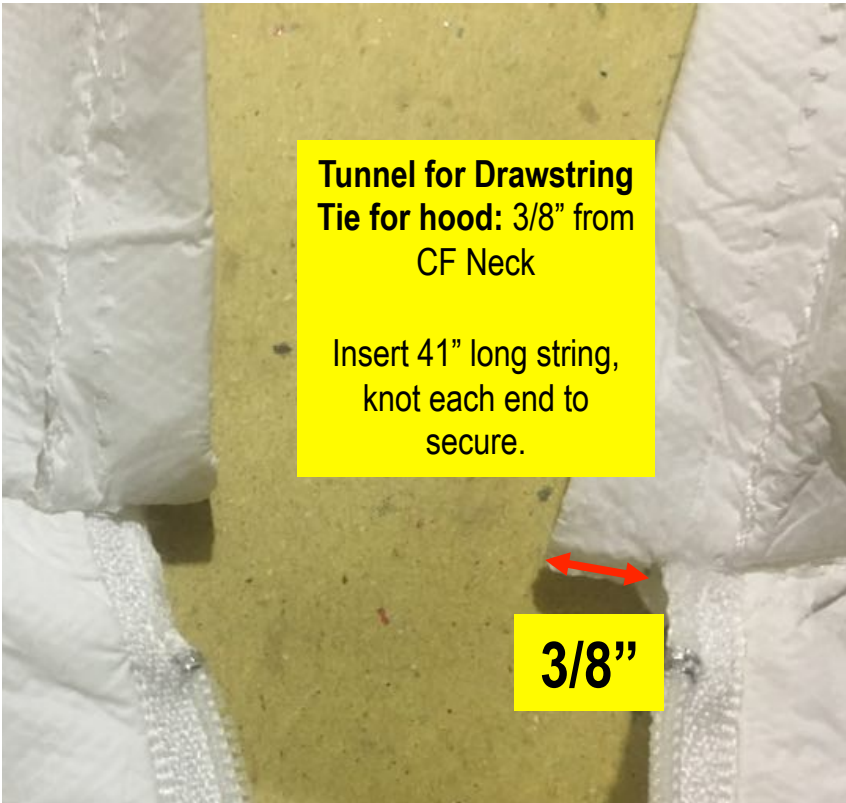
**RECOMMENDED CONSTRUCTION DETAILS FOR DIY PROTECTIVE (Apply if available machine is SINGLE LOCKSTITCH)**



Secure hood at CF  
neckline with 1/4”  
single lockstitch for  
reinforcement  
(bartack)

Attach  
ZIPROTECTIVER to  
body with:  
301 Single Needle  
Lockstitch

SPI:  
Overlock: 8-10 spi  
Single and Double Lockstitch: 6-8 spi



Tunnel for Drawstring  
Tie for hood: 3/8” from  
CF Neck

Insert 41” long string,  
knot each end to  
secure.

3/8”

### ZIPROTECTIVER

PS-1 SUIT		CONSTRUCTION DETAIL PAGE	
STYLE NUMBER:	PS-1 SUIT	FABRICATION	SPUN-BOND FABRIC
DESCRIPTION:	REPLICATED PROTECTIVE SUIT	INITIATED BY:	MICH DULCE for MANILA PROTECTIVE GEAR SEWING CLUB
DATE:	MARCH 25, 2020	CREATED BY:	KENDI MARISTELA

**RECOMMENDED CONSTRUCTION DETAILS FOR DIY PROTECTIVE** *(Apply if available machine is SINGLE LOCKSTITCH)*

**Sleeve and Bottom Hem:**  
1/2" Single Turnback with 3/8" Topstitch with elastic/garter insert

Measurement om Flat (Relax):  
**Sleeve hem: 4"**  
**Bottom Hem: 5 1/2"**

Full Opening Measurement:  
**Sleeve Hem: 8"**  
**Bottom Hem: 11"**

**EXTERIOR VIEW**

3/8" topstitch from bottom edge

**INTERIOR VIEW**

1/8" Edgestitch from Interior top edge

1/2" single turnback/fold

3/8"

**SLEEVE AND BOTTOM HEM**

PS-1 SUIT		OPERATIONS BREAKDOWN (ASSEMBLY)	
STYLE NUMBER:	PS-1 SUIT	FABRICATION	SPUN-BOND FABRIC
DESCRIPTION:	REPLICATED PROTECTIVE SUIT	INITIATED BY:	MICH DULCE for MANILA PROTECTIVE GEAR SEWING CLUB
DATE:	MARCH 25, 2020	CREATED BY:	KENDI MARISTELA

**RECOMMENDED CONSTRUCTION DETAILS FOR DIY PROTECTIVE (Apply if available machine is SINGLE LOCKSTITCH)**

**Operations Breakdown (Assembly):**

1. Join Front and Back body at Inseam with 301 single needle lockstitch with 3/8" sewing allowance.
2. Attach sleeve to body (with seam at the overarm) with 301 single needle lockstitch with 3/8" sewing allowance.
3. Close the shoulder seam and sleeve overarm seam continuously from neckline to sleeve hem with 301 single needle lockstitch with 3/8" sewing allowance.
4. Join centerback seam up to the ziPROTECTIVEr bottom edge placement at centerfront with 301 single needle lockstitch with 3/8" sewing allowance.
5. Attach 26" ZiPROTECTIVEr at centerfront with 301 single needle lockstitch with 3/8" sewing allowance.
6. Hood: Join left and right hood at centerback with 301 single needle lockstitch with 3/8" sewing allowance. Finish hood opening with 1/2" single turnback/fold, 1/4" double needle edgestitch leaving a 3/8 wide tunnel for drawstring. Insert 41"-long drawstring. Knot the end of the string to secure:
7. Attach hood to neckline with 301 single needle lockstitch with 3/8" sewing allowance. Secure hood at CF neckline with 1/4" single lockstitch/reinforcement stitch (bartack).
8. Finish sleeve hem and bottom hem with 1/2" Single Turnback with 3/8" Topstitch with elastic/garter insert. Garter length- (a) Sleeve Hem: 8" long plus 3/8" allowance on each end; (b) Bottom hem: 11" plus 3/8" allowance on each end.

*\*\*nothing follows\**

# PS-1 SUIT

## FOLDING

STYLE NUMBER:	PS-1 SUIT	FABRICATION	SPUN-BOND FABRIC
DESCRIPTION:	REPLICATED PROTECTIVE SUIT	INITIATED BY:	MICH DULCE for MANILA PROTECTIVE GEAR SEWING CLUB
DATE:	MARCH 25, 2020	CREATED BY:	KENDI MARISTELA



**1. Place garment face up. Fold hood inward to the front side**



**2. Fold garment into half vertically matching the sleeves.**



**3. Fold sleeves inward.**



**4. Fold garment in half, hem going upwards.**



**5. Fold again to neckline.**

**VERTICAL QUARTER FOLD**